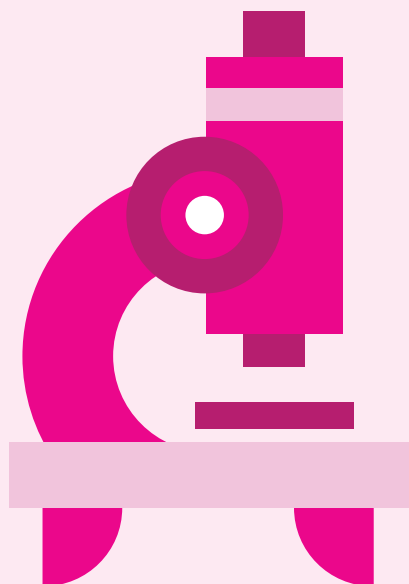


The detail



Our courses

From the time of your application to WQE, we will work with you to create an individual programme of study, building on the valuable experience gained in your previous school or college, and ensuring a balance between examination courses, enrichment activities, support for your learning, study time and leisure.

Our aim is to enable you to choose an individual combination of courses or a specific pathway that meets your needs, interests and aspirations, and offers you the best opportunity for success and progression.

WQE offers a broad range of courses from entry level to level 3. These include ESOL, GCSE, A-level and BTEC courses. Each subject, level or pathway has specific published entry criteria to ensure you choose the programme to which you are best suited and that we enrol you onto a programme on which you will succeed.

Choose the right path

When researching and planning your programme you should take into account what your GCSE achievement is likely to be, what you are interested in, and how studying a subject may prepare or qualify you for what you want to do after WQE.

Making choices about what to study can often be difficult when faced with so many options including subjects that may be new to you. By visiting the WQE website and attending our Open Day you will gain more information on subject, level and pathway options. You can find out about entry requirements, how a subject or course is assessed, what it combines with, and so much more.

Take time to explore, consider carefully and investigate fully – you need to make the right choice for you!

As a guide, use the table below to identify the level and programme type that best matches the qualifications with which you expect to enrol at WQE. Within a programme, individual course/subject specific entry criteria apply. These can be checked on our website. This table is a guide only.

Entering with	Level	Programme	Duration	Leads to...
5 GCSEs grade 9-4 (A* - C) (inc. English Language)	Level 3	- A Levels - Applied General Level 3	2 years	Employment or Higher/ Degree Apprenticeships
5 GCSEs grade 3-4 (D/C) (inc. English Language)	Level 2	- GCSE - Technical Level 2	1 years	Level 3 courses
5 GCSEs grade 2+ (E+) (inc. English Language)	Level 1	- Employability - English - Maths	1 years	Level 2 courses
5 GCSEs grade 1 (F+) (or below)	Entry level	- English - Maths - ICT	1 years	Level 1 courses

Level 3: A levels and Advanced Level Vocational courses

The majority of students at WQE are enrolled on a two-year advanced level programme. WQE offers an exceptionally wide range of advanced level courses creating vast flexibility when it comes to timetabling students' personalised programmes; almost all combinations are possible.

Advanced level courses:

- Are a continuation of the kind of education which you have experienced on your GCSE courses, but with greater specialisation and depth.
- Include A Levels and a range of other level three vocational courses.
- Consist of many subjects with which you are familiar – English, History, Chemistry, Maths, for example – but also many that will almost certainly be new to you such as Psychology, Law, Accounting, Ancient History, Film Studies and Electronics. There is an extensive range of subjects from which to choose.
- Vary significantly one from another - Photography is not the same as Physics! – but all develop your academic and intellectual skills; in some cases practical skills are also an essential part of the course.

- Are assessed through a combination of examinations and coursework, but in most subjects the examinations carry the greater weight.
- Lead to many options in higher education and employment.
- Include courses of a more vocational or applied nature. These have many of the same characteristics as other advanced level courses, but have stronger links with the world of employment. Assessment depends more on coursework than on examinations.
- Often have specific entry criteria.

When planning your programme you should take into account what your GCSE achievement is likely to be, what you are interested in and how studying a subject may prepare or qualify you for what you want to do after WQE. Students who have taken a subject at GCSE should normally have achieved at least Grade 4 or 5 in order to study this subject at A level.

The A level and Advanced Level Vocational courses we plan to offer for 2019 entry are as follows:

Business

- Accounting A Level
- Business Studies A Level
- Economics A Level
- Business Level 3 Cambridge Technical Certificate (equivalent to 1 A level)
- Business Level 3 Diploma (equivalent to 2 A levels)
- Business Level 3 Extended Diploma (equivalent to 3 A levels)
- Business Level 3 Extended Certificate (equivalent to 1 A level)

Humanities

- Law A Level
- Law Level 3 Extended Certificate (equivalent to 1 A Level)
- Public Services level 3 Subsidiary Diploma (equivalent to 1 A Level)

ICT

- Computer Science A Level
- ICT Cambridge Technical Certificate (equivalent to 1 A level)
- ICT level 3 Extended Certificate (equivalent to 1 A Level)
- ICT level 3 Diploma (equivalent to 2 A Levels)
- ICT level 3 Extended Diploma (equivalent to 3 A Levels)

Languages

- French A Level
- German A Level
- Spanish A Level

Media

- English Language A Level
- English Language and Literature A Level
- English Literature A Level
- Film Studies A Level
- Media Studies A Level
- Media Level 3 Extended Certificate (equivalent to 1 A level)

Performing Arts

- Art, Fine A Level
- Art and Design A Level
- Drama and Theatre Studies A Level
- Fashion and Textiles
- Graphic Communication A Level
- Music A Level
- Performing Arts Level 3 Extended Diploma (Dance or Musical Theatre at Studio 79) (Equivalent to 3 A levels)
- Performing Arts Level 3 Extended Diploma (Musical Theatre or Acting pathway at LCPA) (Equivalent to 3 A levels)
- Photography A Level
- Product Design A Level

Science

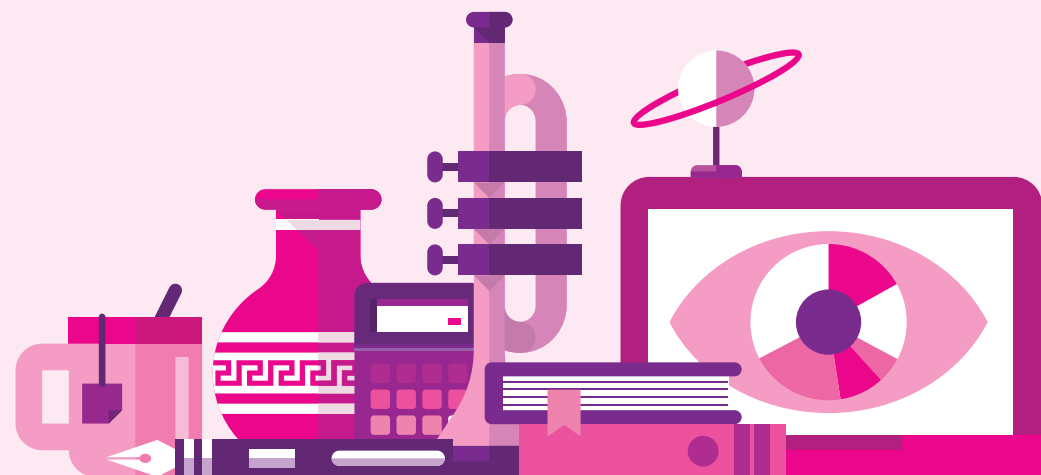
- Biology A Level
- Chemistry A Level
- Electronics A Level
- Further Mathematics A Level
- Mathematics A Level
- Physics A Level
- Science Level 3 Diploma (equivalent to 2 A levels)
- Science Level 3 Extended Certificate (equivalent to 1 A level)

Social Science

- Ancient History A Level
- Geography A Level
- Government and Politics A Level
- Health and Social Care; Cambridge Technical certificate (equivalent to 1 A Level)
- Health and Social Care; Level 3 Diploma (equivalent to 2 A Levels)
- Health and Social Care; Level 3 Extended Diploma (equivalent to 3 A Levels)
- History A Level
- Psychology A Level
- Religious Studies A Level
- Sociology A Level

Sport

- BTEC Level 3 Extended Diploma (equivalent to 3 A Levels)
- Cambridge Technical Certificate (equivalent to 1 A level)
- Level 3 Extended Certificate (equivalent to 1 A Level)
- Level 3 Diploma (equivalent to 2 A Levels)
- Physical Education A Level



Level 2: GCSE and Vocational Courses

Business

- Business Cambridge Technical Level 2 Extended Certificate (equivalent to 1 GCSE)
- Business Cambridge Technical Level 2 Diploma (equivalent to 3 GCSEs)

English and Media

- Media Level 2 Extended Certificate (equivalent to 1 GCSE)
- English Language GCSE

Humanities and Social Science

- Law and Legal Work Level 2 Certificate (equivalent to 1 GCSE)
- Health and Social Care Level 2 Extended Certificate (equivalent to 1 GCSE)
- Health and Social Care Level 2 Diploma (equivalent to 3 GCSEs)
- Citizenship GCSE
- Psychology GCSE
- Sociology GCSE

ICT

- ICT Cambridge Technical Level 2 Extended Certificate (equivalent to 1 GCSE)
- ICT Cambridge Technical Level 2

Visual, Expressive and Performing Arts

- Performing Arts Level 2 Diploma - Dance at Studio 79 – (equivalent to 4 GCSEs)
- Art GCSE
- Photography (digital) GCSE
- Graphics (digital) GCSE

Science and Mathematics

- Biology GCSE
- Chemistry GCSE
- Mathematics GCSE

Sport

- Cambridge technical Level 2 Certificate (equivalent to 3 GCSEs)
 - Cambridge technical Level 2 Diploma (equivalent to 1 GCSE)
- (Above learners will also study English and Maths GCSE if below Grade 4/C)

Level 1: Vocational Courses

- Business Level 1 Certificate in Employability
- English Level 1 Certificate in Employability
- Health Level 1 Certificate in Employability
- ICT Level 1 Certificate in Employability
- Mathematics Level 1 Certificate in Employability
- Science Level 1 Certificate in Employability

(All Level 1 learners study a programme which includes English, Maths and Employability)

ESOL Entry Level Courses

- Entry level 1/2/3
- Level 1

